

PHIL, THE K.A.T. CAT

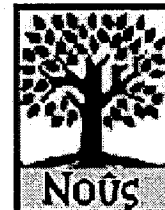
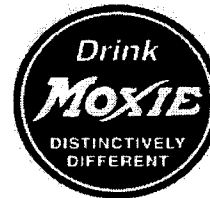
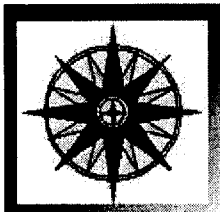
POSTCARDS FROM THE

Mission-critical content



Vol. II, No. 18
May 7, 2001
free of charge, but
CONFIDENTIAL

KA HIERARCHIES:



TEAM SIRIUS:

Bill...Mythology, Folklore, Eschatology
Kris...Zoos and Aquariums, Libraries, Collections, Exhibits
Reed...Applied Ethics, Art Theory, Native Americans, Orphan terms
Emily (Kischell)... Pets, Terrorism, Intelligence
Connelly... Writing Structure & Style, Grammar

TEAM PYXIS:

Carol...Surgery on 600s, Hormones
Alexandra... Neoplasms
Robert... Excretory and the 600s
Lewis... Liver, Pancreas
Michael... Laymxx, Pharynx, Voice

TEAM PEREC:

Bergen... Jewelry, Mental Disease
Katrina...Substance Abuse, Interior Design
Jeff (P.).... Entering frequently occurring terms
Christina... Parapsychology
Sunny...Underwater Exploration, Schools of Psychology

TEAM MOXIE:

Sherry... Metallurgy
Jeff (D.)... Vacationing in NYC
Neil... Optical devices
David... Elastomers
Brett... Information Science

TEAM NOUS:

Mici...Physics, Polymers, Resins, Adhesives & Sealants, Particles, Acids
Kat...Hydrology, Ice, Chemistry expanded
Nancy...Alcohol, Phosphates
Emily (Klein)... Prehistoric Life, Human Evolution
Paul...Evolution, Childcare

KA PROJECTS AND COMMITTEES:

Beta Testing: Sacheen, David M., Theresa
Content: Kris, Michael, Bergen, Sherry, Reed, Connelly, Emily Kischell, Paul, Sacheen
Topics: Theresa, Sacheen
Core Tech: Katrina, Carol, Alexandra, Lewis, Reed
Hierarchy White Paper/Working Paper: Jeff P., Alexandra, Michael
KA Applications (formerly Non-Core Tech): Mici, Jeff D., Paul
KA Hiring: Mici.
Knowledge Transfer: Alexandra, Theresa, Emily Kischell, Michael, Lewis, Robert, Kat
KA Quarterly Report: Emily Kischell, Robert
Discussion Board: Michael, Emily Kischell, Theresa
Manual: Bill, Mici
Product Driven Content: Connelly, Carol, Jeff P., Christina
Mission Statement: Bill, Carol, Jeff P., Connelly, Christina
Productivity: Sacheen
Professional Development (KAPDC): Bergen, Bill, David M., Mici, Emily Klein, Sacheen
Structure Working Group: David M., Neil
Term Miner: Jeff D., Sherry
Testing II: David M., Kris, Sherry
Wellness: Jeff D.

CROSS-FUNCTIONAL TEAMS:

Ambiguity Profile Parameters Optimization (APPO2): Theresa, Sacheen, Neil, Carol, Lewis, Nancy, Alexandra, Robert
Literature Review: Theresa
Automatic Content Expansion (ACE): Bergen, Jeff D.
Intranet: Michael, Kat, Katrina, Bergen, Kim, Dave Rees, Adrienne
Integrated KAT Suite: Carol
Metrics: Nancy, Jeff P., Emily Klein, Sacheen
Press Releases: Michael, David M., Brett
Scientific Validation: Nancy, Sherry
Website: Lewis, David M., Neil, Paul
Zeno2: Robert, Kat

Projects wrapped up: see the Intranet for their reports! **Human Practices, HDO, WNO**

PROJECTS and COMMITTEES: Compiled from weekly update responses and the Working Hours sheet. Are you on a project or committee not listed here, or did we fail to list you for one you're on? Let us know!! For it is written: **THOSE WHO FAIL TO UPDATE THEIR ACTIVITIES SHALL SUFFER THE WRATH OF KATRINA.**

INTRANET DEBUTS; MICHAEL SLEEPS

SAN FRANCISCO, Cal. – May 4, 2001 – **ejemoni**, inc., a developer of personalized information management solutions, today announced the deployment of its next-generation intranet call **ej-five** (or simply, **The Ej**). The **ejemoni** intranet is an unusually versatile communication vehicle with virtually unlimited applications, from online chat and message boards to personalized information delivery (someday soon?)

The **ejemoni** intranet is the result of groundbreaking html development, integration of multiple disparate hardware components, a few all-nighters and countless cups of coffee. **ejemoni** CEO Nicolas Economou stated “With its range of development talent and an advisory board that includes the best from every department, **ej-five** promises to become the de facto standard and *lingua franca* for aggregating, organizing, filtering, sharing, categorizing, routing, accessing, searching, retrieving, exchanging, delivering, ignoring, forgetting, and disclaiming all responsibility unstructured and structured information throughout **ejemoni**. No other corporate intranet can make this claim.”

The Intranet will become the main medium for general company announcements with a time-frame of several days to a week, such as project reports. If you have anything to announce, or any other change you would like to see made to the Intranet, email Intranetadmin@ejemoni.com. Changes should be made by the next business day. You can log into the Intranet by opening Explorer and typing in "intranet" or "ej". You should make it a favorite, or even better, your home page. To those who do this, and register on the new **Echo** discussion board, good things happen.

Postcards and its features will be archived on the Intranet and serve as a weekly summary of **Ej** highlights.

REPORTS FROM THE **PftE** NEWS SERVICE:

Carol: "On-line surgery "how-to's" disturb me." **Lewis**: "Nina Wacholder, our guest this week, quoted Vannevar Bush's famous 1945 article, ' We May Think' in the Atlantic Monthly, as being an inspiration for the field of electronic Information Retrieval. I read it, and found he had a great line worthy of defining KAs: 'There is a new profession of trail blazers, those who find delight in the task of establishing useful trails through the enormous mass of the common record.'" (Note: **Michael** has this article, if anyone is interested.) **Paul**: "Most of this planet can't support people; we can't afford to be greedy." **Robert**: "The human kidneys process 1200ml of blood/min, or, get this, 456 gallons/day! Talk about taking our bodies for granted, that's about 9 oil drums of processed blood per day. I'm suddenly very proud of my kidneys."

KA GROUP MEMBER OF THE WEEK: FIVE QUESTIONS WITHTheresa Murray (Research Associates)!!!

Q: Which major airline has the best safety record?

A: United Airlines.

Q: If you went home for a two hour lunch break each day, what would you prepare yourself?

A: Tuna casserole.

Q: If you could do one really mean thing to Stanford, what would it be?

A: Paint the entire campus blue and yellow.

Q: Vetting or relevant judgments?

A: Aren't they the same?

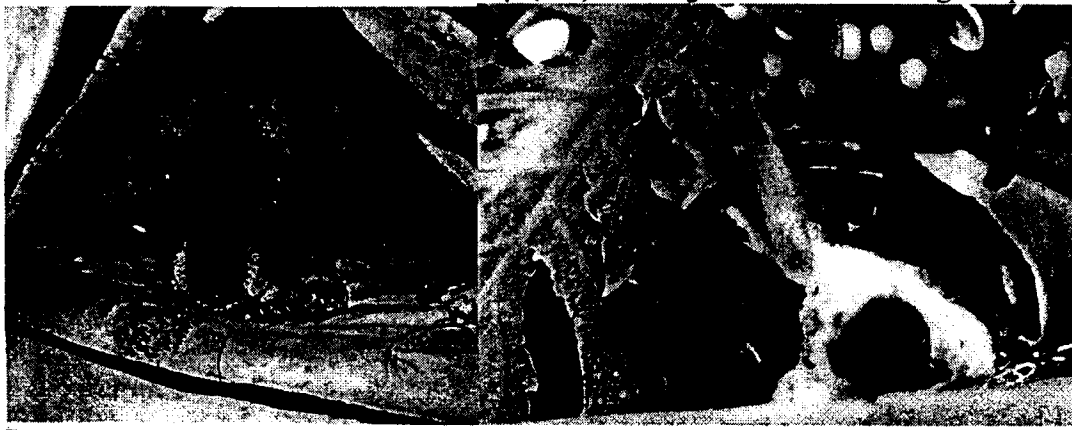
Q: How relevant is **PftE** to the work of **ejemoni**?

A: Duh?

Look out! Next time YOU could be KA Group Member of the Week!!

Postcards from the Ej is brought to you by **Kat Berry** (Publisher with reddish hair), **Katrina Mogielnicki** (Editor with pony tail), **Bergen Kenny** (Editor with straight hair) and **Michael Stoler** (Copy boy with short hair.)

KA GROUP PETS OF THE WEEK: Pokey (left) and Rags Drucker!! Got a great pet? Send us a photo!



THE LIST:

1. James explains software engineering
2. Katrina explains Human Practices
3. Brett explains empiricism
4. Theresa, Sherry, and Emily's rug
5. Joe and Lemuel's Slappie fight